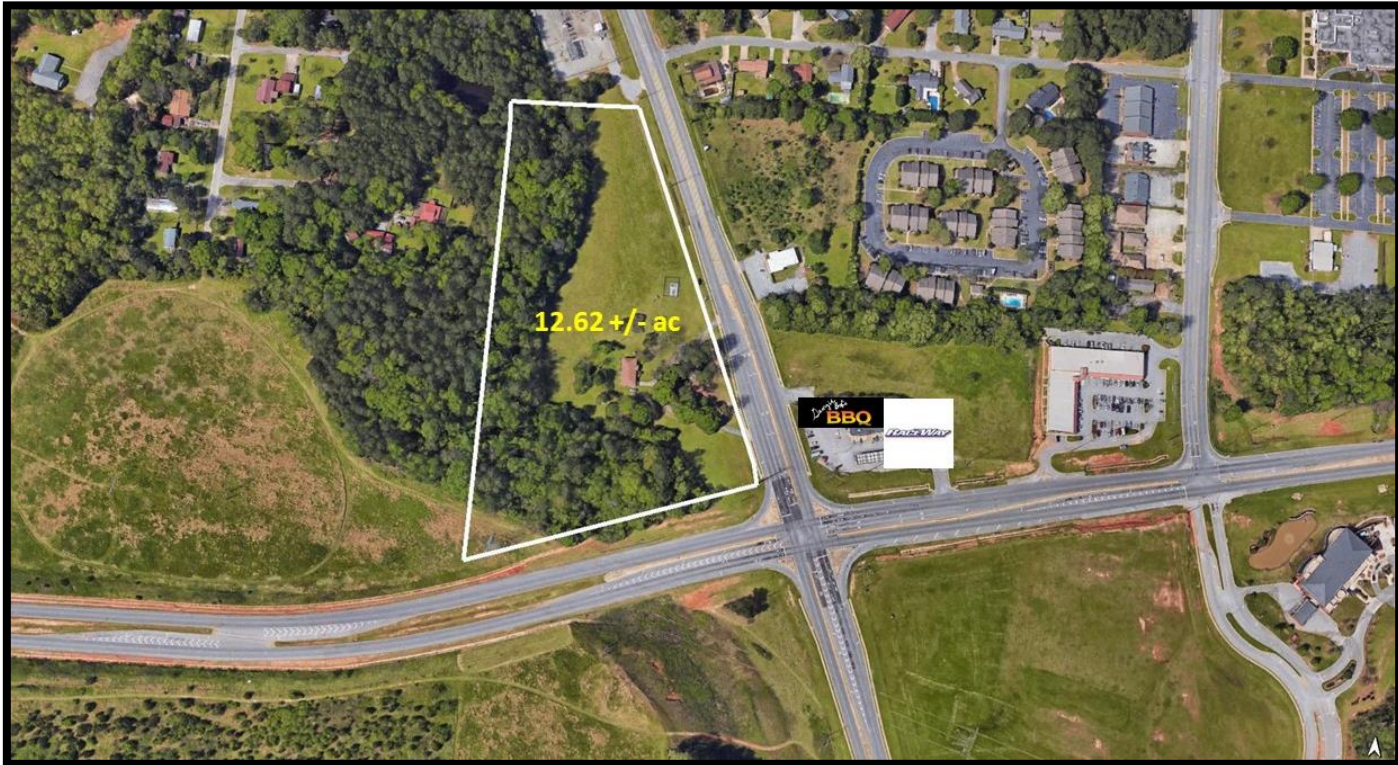


FOR SALE: 12.62 +/- ac
Houston Lake Road and Russell Pkwy
Warner Robins, GA

The Bateman Group LLC.
Commercial Real Estate
Oliver C. Bateman III, Broker



- Location: Intersection of Russell Pkwy and Houston Lake Road
- Owner will subdivide
- High traffic area
- All utilities available

	1 mile	3 miles	5 miles
Population	4,937	61,677	120,130
Median Household Income	\$65,054	\$64,058	\$61,344

\$275,000/acre

Oliver C. Bateman, III
 Office: 478-745-0008
 Fax: 478-745-0009
 Cell: 478-972-6043
 oliver@thebatemangroup.com
 2885 Walden Road
 Macon, GA 31216



www.thebatemangroup.com

The Bateman Group LLC.
Commercial Real Estate
Oliver C. Bateman III, Broker

The above information is deemed reliable, but not guaranteed. It has been obtained from sources believed to be reliable; however, you are advised to verify this information through personal or professional inspections.

FOR SALE: 12.62 +/- ac
Houston Lake Road and Russell Pkwy
Warner Robins, GA

The Bateman Group LLC.
Commercial Real Estate
Oliver C. Bateman III, Broker

Key Facts 5 mile Radius

KEY FACTS

120,130

Population



2.6

Average Household Size

36.0

Median Age

\$61,344

Median Household Income

EDUCATION

8%

No High School Diploma



26%

High School Graduate



36%

Some College



29%

Bachelor's/Grad/Prof Degree

BUSINESS



3,103

Total Businesses



62,850

Total Employees

EMPLOYMENT



64%

White Collar



24%

Blue Collar



12%

Services

4.4%

Unemployment Rate

INCOME



\$61,344

Median Household Income



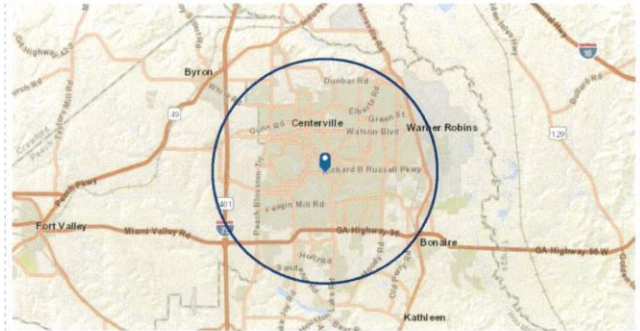
\$29,873

Per Capita Income



\$99,219

Median Net Worth



Oliver C. Bateman, III
 Office: 478-745-0008
 Fax: 478-745-0009
 Cell: 478-972-6043
 oliver@thebatemangroup.com
 2885 Walden Road
 Macon, GA 31216



www.thebatemangroup.com

The Bateman Group LLC.
Commercial Real Estate
Oliver C. Bateman III, Broker

The above information is deemed reliable, but not guaranteed. It has been obtained from sources believed to be reliable; however, you are advised to verify this information through personal or professional inspections.